

Coarse Wavelength Division Multiplexing (CWDM)

Generate More Revenue with Less Fiber





The evolution to next generation services places extraordinary demands on today's networks, requiring more fiber and bandwidth than ever before.

Market studies indicate that the accrued expense to deploy new fiber cable translates into thousands of dollars per mile.

What if there was a cost-effective way to do more with your existing fiber network?

The CWDM Advantage

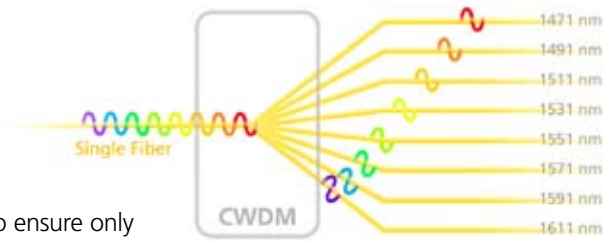
ADC Coarse Wave Division Multiplexing (CWDM) Solutions, part of the ADC's Value-Added Module (VAM) family, add flexibility and functionality to the optical transport system.

CWDM modules separate light, or wavelengths, allowing multiple signals to be transmitted simultaneously over a single fiber. The benefits of this are easily translated to your bottom line:

- Maximizes the existing fiber network, allowing you to meet additional service requirements without adding additional fiber
- Enables out-of-band testing—simply dedicate a separate wavelength for testing and monitoring
- Installs easily—and maintenance is just as simple

Here's How it Works

In simple terms, a passive CWDM implementation involves placing VAM modules and upgraded transmitters and receivers at each end of the network segment. CWDM equipment performs two functions: 1) segregates the light to ensure only the desired combination of wavelengths are used, and 2) multiplexes and demultiplexes the signal across a single fiber link.



In many applications, a 1310 nm fiber route has already been established to accommodate existing services. By adding additional wavelengths with CWDM technology, new services can co-exist on the same, existing fiber.

Providers can install a CWDM system at the headend that will drop one 20 nm channel (wavelength) at each node along a particular configuration. Each CWDM device is packaged into the VAM platform for seamless integration into fiber panels, distribution frames or cross-connect frame systems, saving floor space and eliminating extra patch cords.

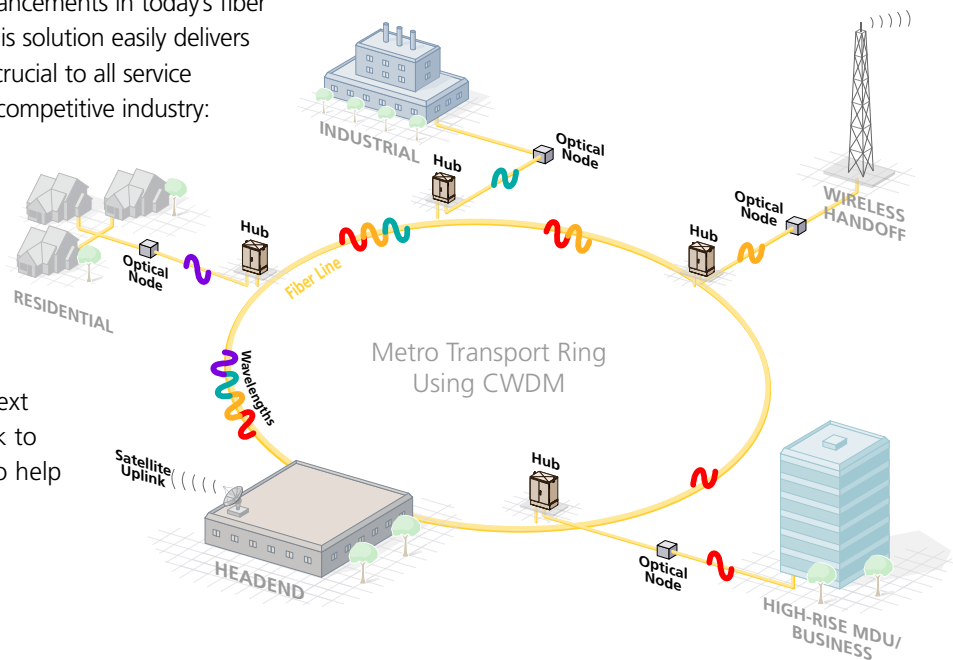
This cost-effective technology allows you to meet additional service requirements by increasing the capacity of your existing fiber by 4 times, 8 times or more. It takes less fiber to generate more revenue.

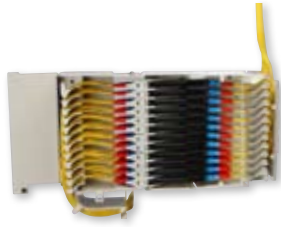
Creating an Optimized Fiber Network

CWDM technology simply makes sense, particularly with the technological advancements in today's fiber and transceiver options. This solution easily delivers the requirements that are crucial to all service providers in today's highly competitive industry:

- Transparency
- Scalability
- Low Cost

When new applications and increasing demand set the pace for today's next generation networks, look to ADC's CWDM solutions to help you win the race.





New networks require new ways of thinking.

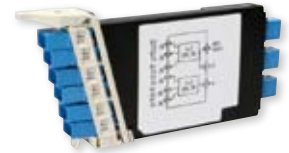


A Tradition of Innovation

CWDM's are part of ADC's comprehensive Value-Added Module Portfolio, which includes the following innovative products:

- Module Styles, including **WDMs, CWDMs and DWDMs**
- Module Types, including MicroVAMs, WideVAM, as well as Standard and LGX-compatible VAMs
- In addition, industry standard connector types are available in a range of options

New networks require new ways of thinking. For more information on CWDMs, VAMs and the entire family of ADC solutions, speak with your ADC representative today.



Additional detail on ADC VAM products can be found in Catalog #101663AE



Website: www.adc.com

From North America, Call Toll Free: 1-800-366-3891 • Outside of North America: +1-952-938-8080

Fax: +1-952-917-3237 • For a listing of ADC's global sales office locations, please refer to our website.

ADC Telecommunications, Inc., P.O. Box 1101, Minneapolis, Minnesota USA 55440-1101

Specifications published here are current as of the date of publication of this document. Because we are continuously improving our products, ADC reserves the right to change specifications without prior notice. At any time, you may verify product specifications by contacting our headquarters office in Minneapolis. ADC Telecommunications, Inc. views its patent portfolio as an important corporate asset and vigorously enforces its patents. Products or features contained herein may be covered by one or more U.S. or foreign patents. An Equal Opportunity Employer

104919AE 6/07 Original © 2007 ADC Telecommunications, Inc. All Rights Reserved